



THE CHAMPIONSHIPS, WIMBLEDON

27TH JUNE - 10TH JULY 2016



ENJOY AN UNFORGETTABLE DAY AT WIMBLEDON

The Championships, Wimbledon is the oldest, most prestigious tennis tournament in the world. It is an event renowned for its sporting drama, love of tradition and the quintessentially British atmosphere. There is no better place to entertain clients, treat family and friends or stage your own corporate event.

AN EXCEPTIONAL OFF-COURT EXPERIENCE

The Fairway Village is just a short walk from Centre Court and boasts a VIP lounge, private dining area and a relaxing garden cocktail bar. It is the perfect base for all-day entertainment and the very best place to soak up the atmosphere between matches and enjoy the Championships in true Wimbledon style.

THE PERFECT HOSPITALITY PACKAGE

Whether you are visiting as a couple, a small group or a large party, we have an award-winning hospitality experience that will make Wimbledon the most memorable ever.

- All day access to the Fairway Village and Village Suite
- Officially reserved ticket for Centre or No.1 Court
- Tea and coffee
- Cocktails, Champagne and Pimm's reception
- Complimentary bar and Champagne all day
- Live kitchen experience
- Three course à la carte lunch with fine wines and coffee
- Large private garden area
- Garden cocktail bar
- Traditional afternoon tea
- Air conditioning
- Car park pass (1 per 2 guests)
- Shuttle bus
- Commemorative VIP pass and official documentation
- Exceptional customer service from our experienced event staff
- Extra touches: Live musical entertainment, sun cream, bottled water to take to the tennis, live coverage and wi-fi access

All the benefits of the Village Suite package, plus...

- All day use of your own private chalet within the Fairway Village
- Company branding prominently displayed
- Itineraries branded with your company logo
- Set up and use of your chalet for meetings / presentations
- Option to 'theme' your chalet in corporate colours*
- Hosting by a tennis celebrity*
- Your own plasma TV screens to keep guests informed of play

Chalet suggestions:

- Product launches
- Board meetings
- Presentations
- Incentive programmes

* additional costs may apply





VILLAGE SUITE

FOR INDIVIDUALS AND SMALL GROUPS

As well as a reserved ticket for Centre or No.1 Court, you will receive all-day access to the Fairway Village and the Village Suite fine dining restaurant with full hospitality. This includes a Champagne and Pimm's reception, à la carte lunch served with fine wines and prepared in our live kitchen followed by afternoon tea with strawberries and cream.

You will also enjoy complimentary drinks all day long with access to our extensive garden area (the largest at Wimbledon) and exclusive garden cocktail bar. Live musical entertainment is staged throughout the day and the matches will be shown live on plasma screens.

CHALETS

FOR LARGER GROUPS OR CORPORATE EVENTS

In addition to the benefits of the Village Suite, for groups of over 30 our chalets offer unique opportunities for private dining, board meetings or corporate events. Each chalet has a private garden and all can be customised to your specific requirements. We can even provide a tennis celebrity to host your event. Plasma screens will be installed to keep you informed of the day's play and dedicated event staff will ensure your experience is exceptional.

Fairway Village chalets are the closest official hospitality to Centre Court and have been successfully used by blue chip corporates, federations and private individuals to stage their own special bespoke events during the tournament.

STARTERS

Chilled pea soup

Crab salad and black olive oil

Smoked duck pastrami with blood orange balsamic jelly

Date and artichoke purée and coriander cress

Char-grilled asparagus

Shaved pecorino and truffle oil

HOT MAINS

Char-grilled shropshire birchstead sirloin steak

Tarragon butter, sautéed wild mushrooms and wilted spinach, a garlic tomato fondue

Tandoori cambrian mountain lamb cutlets

Spiced potato and spinach

Onion and garlic potato rosti

Buttered spinach served with a poached hen's egg, parsley and nutmeg sauce

Offered with either rosemary and maldon sea salt new potatoes or skinny chips

COLD MAINS

Seafood tasting platter

Lobster with mango and rice and a wimbledon salad,
smoked salmon with an asian salad and wasabi dressing,
prawn, mango and paw paw salad,
crab and chicken vietnamese rice paper roll

The Groundsman's Platter

A classic english ploughman's of a duck and pork rilette, godminster organic cheddar, gloucester old spot scotch egg, honey and mustard glazed gammon, pickled onions, picalilli, wimbledon salad and a freshly warmed baguette

DESSERTS

Dark and milk chocolate terrine

Milk chocolate and peanut popcorn clusters

All things raspberry

Raspberry mousse with a raspberry jelly, raspberry coulis and an amaretti biscuit crumb

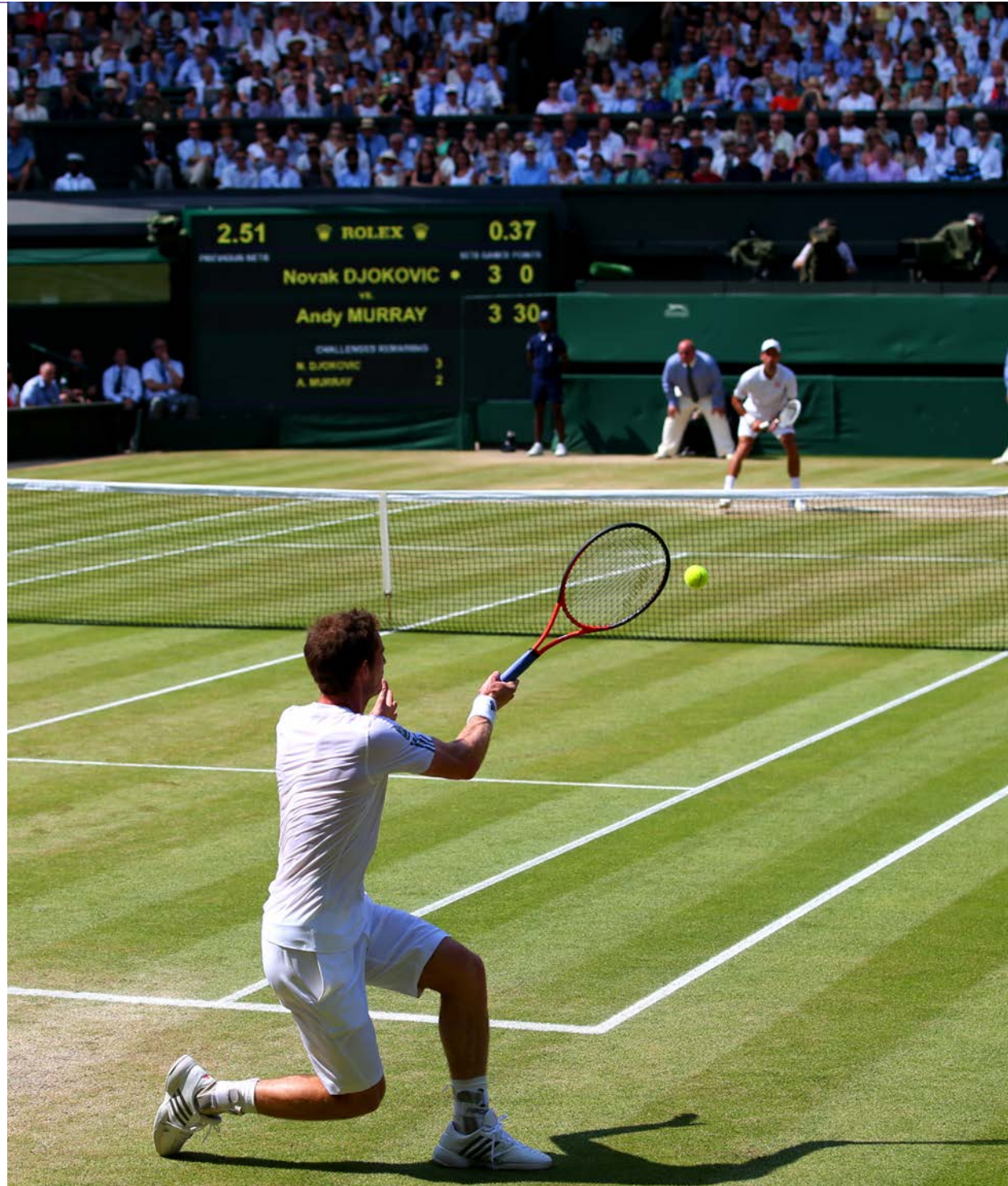
Anyone for tennis?

White chocolate tennis ball filled with a passionfruit and orange sorbet served with an exotic fruit coulis



10:30am	Fairway Village opens
11:00am	Champagne and Pimm's reception
11:45am	A la carte lunch with wines and coffee
12:45pm	Proceed to the All England Lawn Tennis Club to your reserved seat
1:00pm	Play commences on Centre and No.1 Court
4:30pm	Full afternoon tea (option to return for more tennis)
7:30pm	Restaurant closes

*After 7.30pm we respectfully ask guests to enjoy their drinks in the lounge or garden areas. Please note the bar will close at 9.30pm and the facility will close at 10.00pm.



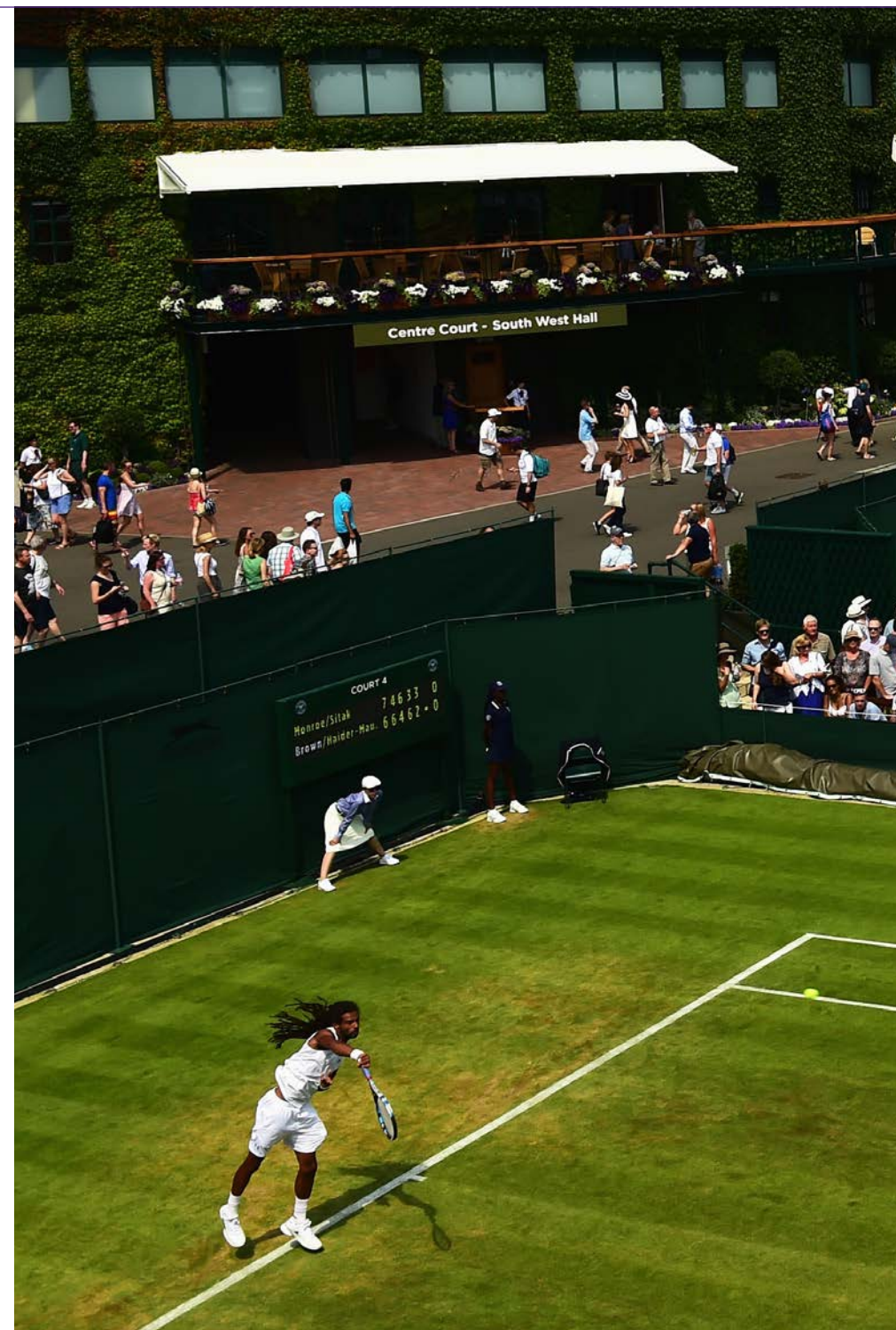
PRICING

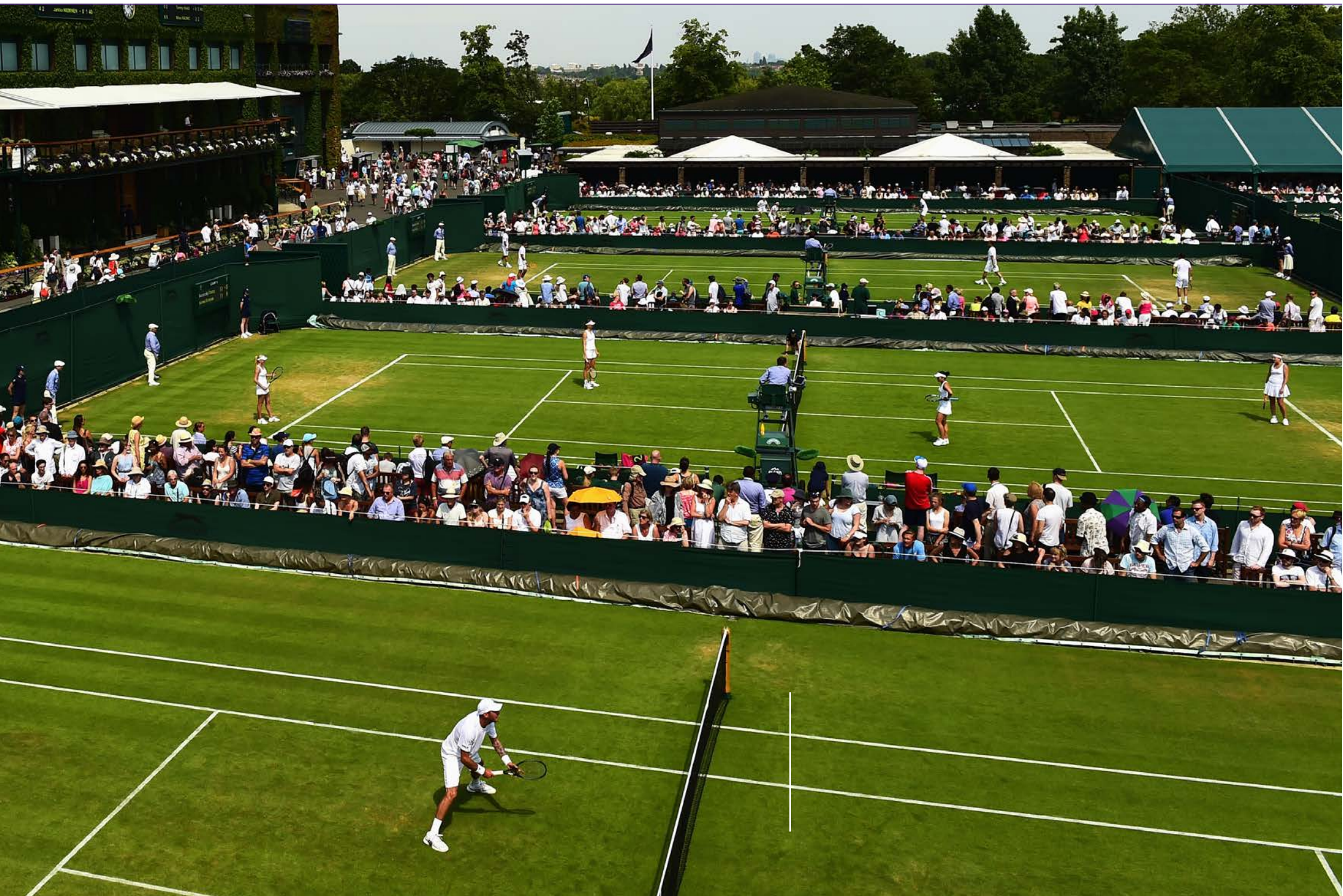
	VILLAGE SUITE CENTRE COURT	VILLAGE SUITE NO.1 COURT	PRIVATE CHALET CENTRE COURT	PRIVATE CHALET NO.1 COURT
MONDAY 27TH JUNE	£1,495	£905	£1,595	£1,095
TUESDAY 28TH JUNE	£1,295	£895	£1,395	£995
WEDNESDAY 29TH JUNE	£1,495	£795	£1,595	£895
THURSDAY 30TH JUNE	£1,645	£745	£1,745	£845
FRIDAY 1ST JULY	£1,845	£945	£1,945	£1,045
SATURDAY 2ND JULY	£1,695	£795	£1,795	£895
MONDAY 4TH JULY	£2,195	£995	£2,295	£1,095
TUESDAY 5TH JULY	£1,195	£625	£1,295	£725
WEDNESDAY 6TH JULY	£2,895	£1,255	£2,995	£1,355
THURSDAY 7TH JULY	£1,395	£595	£1,495	£695
FRIDAY 8TH JULY	£3,795	n/a	£3,895	n/a
SATURDAY 9TH JULY	£1,795	n/a	£1,895	n/a
SUNDAY 10TH JULY	£4,495	n/a	£4,595	n/a

Prices are per person and exclude VAT. Prices are subject to final confirmation and availability at the time of booking.

Please note:

- Tickets are guaranteed in pairs
- Play is provisional and subject to change







622 ARE PLAYED IN TOTAL OVER THE
MATCHES 2 WEEKS OF THE TOURNAMENT

54,250

BALLS ARE USED THROUGHOUT THE TOURNAMENT, STORED AT A CONSTANT 20 DEGREES CELSIUS



3.25	ROLEX	1.15
PREVIOUS SETS		SETS GAMES POINTS
7	Novak DJOKOVIC	1 4 30
1	v	
6	Roger FEDERER	0 4 0
CHALLENGES REMAINING		
	N. DJOKOVIC	2
	R. FEDERER	2
wimbledon.com		

THERE ARE
128
PLAYERS
IN EACH OF THE
MEN'S AND
WOMEN'S
SINGLES DRAW

THE ALL
ENGLAND
CLUB HAS

41
GRASS
COURTS

(19 CHAMPIONSHIP COURTS
PLUS 22 PRACTICE COURTS)

THE GRASS IS
CUT TO A
PRECISE 8MM



HOW TO BOOK

To discuss any of our Wimbledon packages and how we can help you enjoy this iconic sporting event, please contact your Wimbledon agent.

OFFICIAL HOSPITALITY

AT THE FAIRWAY